

RICOH

RICOH

DATA STREAM ENHANCE

DS Enhance

Main features of DS Enhance for DDP/EMP Printers:

FEATURE	DESCRIPTION
Application	Windows GUI
Operating Systems	Windows XP or 2000
Operation Modes	Development, Run-time
Data Formats	All. DS Enhance is Data Format independent
Input Data Source	Hot Folder, TCP/IP Port or LPR Input Queue
Processors (plug-ins) Command	<ul style="list-style-type: none">• Command Addition Processor• Line Utility• Character Set Conversion Processor• Data Replacement Processor• File Copy Processor• Job Concatenation Processor• Job Splitting Processor• Conditional Processor<ul style="list-style-type: none">- Logical Operations- Command Line Utility Condition- File Name Condition- File Size Condition- Data Condition- Text Search Condition• Multiplexer Processor
Output Data Source	Disk Folder, TCP/IP Port, LPR Output or Windows Printer Output Queue
Job active in one workflow	Single job, multiple jobs
Job Timeout	User defined
Help	HTML
License	License per Server
Minimum Requirements	
Processor:	1.5GHz Intel Pentium 4-class processor
RAM:	265MB RAM
Hard disk:	11MB for application, 110MB for .NET Framework, additional 40M for installation 2MB for Enterprise Instrumentation Framework
Display:	1024 x 768 or higher-resolution display with 65535 colors
Other:	<ul style="list-style-type: none">• Internet Explorer 6.0 or later• .NET Framework 1.1 (built in the installation program)• Enterprise Instrumentation Framework (built in the installation program)

Ricoh Printing Systems America, Inc.
2635-A Park Center Drive
Simi Valley, CA 93065-6209
Phone: 888.252.4193
Website: www.rpsa.ricoh.com



© 2006 Ricoh Printing Systems America, Inc. All rights reserved.

Ricoh and the Ricoh logo mark are registered trademarks of Ricoh Co., Ltd. All other trademarks are property of their respective owners. This document, prices and specifications are subject to change without notice.

LIT0801 5/2006



Ricoh Printing Systems America introduces workflow development software

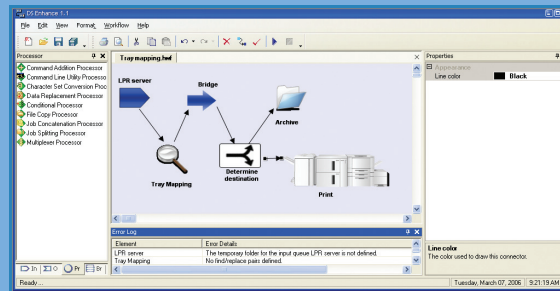
SOLUTION
EFFECTIVE
ADVANCED

Customers can now design efficient workflows using DS Enhance, a new Windows® development environment that is available as part of the Enhance Productivity Suite.

This workflow tool provides a technician with a way to improve or extend an existing workflow, automate a manual process or assist with the re-engineering of a customer's printing processes.

DS Enhance is intended to work within an existing workflow rather than replace customer-developed software or protocol conversion software, such as Metacode to PCL conversion. The DS Enhance application runs as either a development environment or as a batch processor.

In the DS Enhance application job processing framework users can prototype, develop, maintain and extend one or many workflows within the windows framework through a sophisticated but simple to use GUI.



Technicians can graphically create a workflow, test the workflow and then run the workflow in a secure and automated manner. Some programming skills are useful but not required to use the features.

DS Enhance workflow utilizes predefined data processors or plug-ins that perform most data stream tasks such as find and replace, concatenation, conditional branching, splitting, and character-set conversion. Support is also available for the re-use of existing data manipulation software such as scripts or custom programs that the customer may already be using.

DS Enhance provides the following benefits, which directly affect the implementation ROI for customers and professional services.

- Simple graphical workflow builder (no scripts)
- Create workflows within existing processes or workflow (no replacement just addition)
- Uses standard components and customer-specified existing applications (re-use of investment)
- Data file format independent (not just text processing)
- Printer independent
- High performance
- Based on four years of product development.

SIMPLE WORKFLOW

