

RICOH

RICOH

Ricoh Printing Systems America, Inc.
2635-A Park Center Drive
Simi Valley, CA 93065-6209
Phone: 888.252.4193
Website: www.rpsa.ricoh.com

JOB TICKET ENHANCE

JT Enhance

The following table lists the main features of JT Enhance for DDP/EMP printers:

| FEATURE | DESCRIPTION |
|---------------------|--|
| Supported Printers | DDP 70e, DDP 92, DDP 184, EMP 156 |
| Job Tickets | <ul style="list-style-type: none">• RPSA PJI (DDP 70e, DDP 92 and EMP 156 only)• Create, modify, delete (DDP 70e, DDP 92 and EMP 156 only)• Most printer driver features available |
| Queue Support | <ul style="list-style-type: none">• Create, modify, delete• Access to printer ports and queues |
| File Formats | <ul style="list-style-type: none">• PDF• TIFF |
| Operating Systems | <ul style="list-style-type: none">• Windows® XP• Windows 2000 |
| Minimum Requirement | Internet Explorer 6.0 |

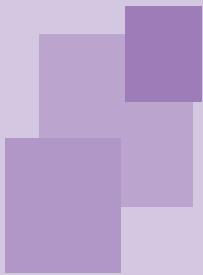
Due to a comprehensive use of XML for job ticket construction and the user interface, additional printers or copiers can be added upon request.



© 2006 Ricoh Printing Systems America, Inc. All rights reserved.

Ricoh and the Ricoh logo mark are registered trademarks of Ricoh Co., Ltd. All other trademarks are property of their respective owners. This document, prices and specifications are subject to change without notice.

LIT0811 5/2006

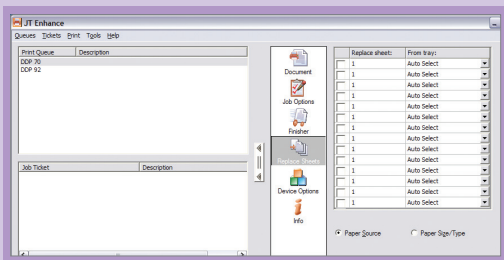


Ricoh Printing Systems America presents Enhance Productivity Suite

SOLUTION
EFFECTIVE
ADVANCED

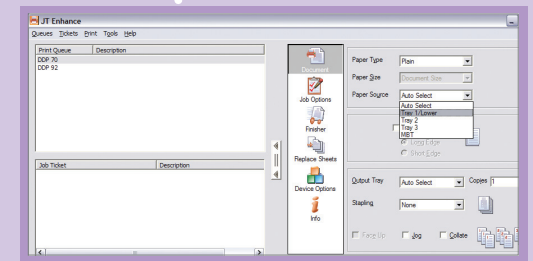
Enhance Productivity Suite

The Enhance Productivity Suite consists of applications that can assist with the integration of DDP/EMP printers from Ricoh Printing Systems America (RPSA) into customer business solutions. These applications provide the "glue" between the host application and the printer by adapting the source data for optimal printing. Although typically installed by a Professional Services engineer, the user-friendly, state-of-the-art applications are available to all users.



JT Enhance

Due to the extensive use of PDF documents in today's business environment, customers are looking for the most efficient way to print these files. Today files can be sent directly to the printer without the need to open an application and use the traditional print driver. These files are referred to as "printer-ready" and are sent, usually with an attached job ticket, directly to the printer where they are processed and printed. As a result, the printing process for PDF files has become much more efficient than ever before.



JT Enhance has been developed to fit the need of driver-less printing. The JT Enhance application allows users to send PDF and TIFF files directly to the printer with or without the addition of a job ticket. Job tickets are easily managed by using a familiar graphical user interface, which has been designed to look like a standard printer driver. Use of JT Enhance will simplify your printing workflow and improve production schedules.

PDF TIFF

DIRECT PRINTING

