

RICOH

RICOH

WF Enhance Features (Continued)

WORKFLOW

Load Balancing	Copy split, page split, round robin
Substitution	Printer switch when printer error occurs - out of paper etc.
Printer Status	<ul style="list-style-type: none">• On-line, configuration, media supply, model• Usage statistics
Error Recovery	<ul style="list-style-type: none">• Job restart or device switch• Page level
Monitoring	Job start, job complete, physical printer status

Requirements and Specifications

WF ENHANCE SERVER PC SPECIFICATIONS

Operating System	<ul style="list-style-type: none">• Windows XP or 2000• Professional Server or Workstation
CPU	Pentium III 400 MHz or faster
Memory	64 MB

WF ENHANCE CLIENT PC SPECIFICATIONS

Operating System	<ul style="list-style-type: none">• Windows Workstation• Windows 95/98• Windows NT 4.0 w/Service Pack 6 or later• Windows 2000 Professional• Windows XP HomeEdition or Professional w/Service Pack 1 or later
CPU	Pentium III 400 MHz or faster
Memory	64 MB

WF CONFIGURATION SPECIFICATIONS

Supported Printers	DDP 70e, DDP 92, EMP 156 PostScript option required
Network	TCP/IP, SNMP w/MIBs, LPR
Printing Formats	EMF, PostScript, PCL

Ricoh Printing Systems America, Inc.
2635-A Park Center Drive
Simi Valley, CA 93065-6209
Phone: 888.252.4193
Website: www.rpsa.ricoh.com

WORKFLOW ENHANCE

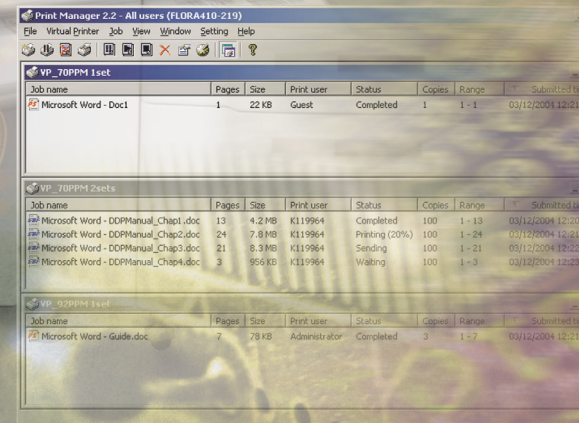
WF Enhance

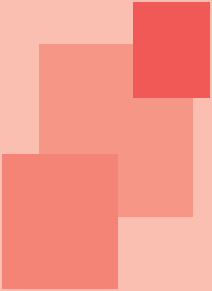


© 2006 Ricoh Printing Systems America, Inc. All rights reserved.

Ricoh and the Ricoh logo mark are registered trademarks of Ricoh Co., Ltd. All other trademarks are property of their respective owners. This document, prices and specifications are subject to change without notice.

LIT0821 5/2006





Ricoh Printing Systems America introduces workflow enhancement software

SOLUTION
EFFECTIVE
ADVANCED



WF Enhance is a robust centralized print server that incorporates job management, printer status and control and printing workflow. It has been designed specifically to work with the DDP/EMP series printers and utilizes many of the sophisticated network capabilities of these devices.

Job Management

Using a Windows® graphical client application, the print operator is able to manage the printing workload that can originate from any workstation on the network. By having access to all jobs, the operator is able to maximize the use of the printing resources and ensure that the most important jobs are printed first. Jobs can be printed, scheduled, paused, deleted, prioritized and reprinted using simple mouse clicks or even archived for later reprinting with the same settings.

Workflow

WF Enhance allows the print operator to construct different workflows, which can significantly increase printing productivity. Specific workflows offered include printer clustering, round-robin printing and device substitution. Clustering of two or more printers provides load balancing based on copy and page splitting, while round-robin workflow reduces the wear on one printer by constantly selecting a different device for each new print job. All workflows offer the ability to relocate a job to another printer of similar capabilities when the active printer fails.

Local Printers

WF Enhance provides a means to create a logical printer that has been configured to perform a specific default function such as pre-printed forms. A logical printer can also represent a cluster of physical printers or allow the print jobs to be routed to the next available free printer.

Status

WF Enhance ensures that the operator is in control of the print system by providing real time printer and job status. Through a sophisticated use of network feedback (via SNMP), the job progress is monitored until it exits the printer; all physical printer device status is also monitored.

WF Enhance Features

PRINT MANGER

Jobs	<ul style="list-style-type: none">• Print, delete, hold, reprint• Schedule (date, time)• Priority• Status (held, printing, printed)• Check if paper size/type is available• Print Preview EMF files only• End of print notification• Separator Pages
------	---

JOB ARCHIVING

Format	EMF (Enhanced Metafile) or PostScript®
Job	Saves all settings

PRINTER

Logical Printers	<ul style="list-style-type: none">• Create, rename, delete, group• Physical printer(s) setup• Print settings
------------------	--

ENHANCED WORKFLOW